

COSO[®]
D E S I G N

Original Operation Manual Slow Juicer



Item no. 13500

USA Branch

CASO Design USA LLC

50 Mountain View Rd

Warren, NJ, 07059

Info@CasoDesignUSA.com

www.CasoDesignUSA.com

T.: 908.604.0677

Document No.: 13500 2014-08-07

Printing and typographical errors reserved.

© 2018 CASO Design USA LLC

1	Operating Manual	4
	1.1 Important Safeguards	4
	1.2 General	4
	1.3 Information on this manual	4
	1.4 Warning notices	5
	1.5 Limitation of liability	5
	1.6 Copyright protection	6
2	Safety	6
	2.1 Intended use	6
	2.2 General Safety information	6
	2.3 Sources of danger	7
	2.3.1 Dangers due to electrical power	7
3	Commissioning	8
	3.1 Safety information	8
	3.2 Delivery scope and transport inspection	8
	3.3 Disposal of the packaging	8
	3.4 Setup	9
	3.5 Electrical requirements	9
4	Design and Function	9
	4.1 Overview	9
	4.2 Assembling	10
5	Operation and handling	11
	5.1 How to use	11
	5.1.1 Juicing-Locking-Function Switch	11
6	Cleaning and maintenance	12
	6.1 Safety information	12
	6.2 Cleaning	12
7	Troubleshooting	12
8	Disposal of the Old Device	13
9	Guarantee	14
10	Technical Data	15

1 Operating Manual

1.1 Important Safeguards

1. Read all instructions before using.
2. This appliance generates heat. Do not touch hot surfaces.
3. To protect against electrocution do not immerse any part of the unit in liquid.
4. Children must be closely supervised when near the unit. Do not let children operate the unit without close supervision.
5. Unplug the unit when not in use and before cleaning. Allow unit to cool before cleaning.
6. Inspect the unit, its power cord and plug for any damage before using. If there appears to be any damage or if the unit shows signs of malfunctioning, do not use the appliance. Return the appliance to the nearest authorized service facility for inspection and repair.
7. Do not use accessory attachments that have not been recommended by the manufacturer.
8. Do not use outdoors.
9. Do not allow cord to touch hot surfaces or hang over sharp edges such as those on countertops.
10. Do not place the unit on or near a hot gas or electric burner, or heated oven.
11. Exercise caution when moving cookware containing hot liquids.
12. To unplug the unit, turn off the unit, then remove the plug from its outlet.
13. Do not use this appliance for any unintended use.
14. SAVE THESE INSTRUCTIONS.

1.2 General

Thanks for using our Slow Juicer (Slow-speed Juice Extractor). Before use, please read this manual carefully to correctly understand how to use the juice extractor and fully use its superior properties. Please keep properly this manual for reference when necessary. If there are any questions during use, please contact our after-sale service station or our company directly. We are always at your service. Thank you very much.

1.3 Information on this manual

These Operating Instructions are a component of the Slow Juicer (referred to hereafter as the Device) and provide you with important information for the initial commissioning, safety, intended use and care of the device.

The Operating Instructions must be available at all times at the device. This Operating Manual must be read and applied by every person who is instructed to work with the device:

- Commissioning
- Operation
- Troubleshooting and/or
- Cleaning

Keep the Operating Manual in a safe place and pass it on to the subsequent owner along with the device.

1.4 Warning notices

The following warning notices are used in the Operating Manual concerned here.

Danger

A warning notice of this level of danger indicates a potentially dangerous situation.

If the dangerous situation is not avoided, this can lead to death or serious injuries.

- ▶ Observe the instructions in this warning notice in order to avoid the danger of death or serious personal injuries.

Warning

A warning notice of this level of danger indicates a possible dangerous situation.

If the dangerous situation is not avoided, this can lead to serious injuries.

- ▶ Observe the instructions in this warning notice in order to avoid the personal injuries.

Attention

A warning notice of this level of danger indicates a possible dangerous situation.

If the dangerous situation is not avoided, this can lead to slight or moderate injuries.

- ▶ Observe the instructions in this warning notice in order to avoid the personal injuries.

Please note

A notice of this kind indicates additional information, which will simplify the handling of the machine.

1.5 Limitation of liability

All the technical information, data and notices with regard to the installation, operation and care are completely up-to-date at the time of printing and are compiled to the best of our knowledge and belief, taking our past experience and findings into consideration.

No claims can be derived from the information provided, the illustrations or descriptions in this manual.

The manufacturer does not assume any liability for damages arising as a result of the following:

- Non-observance of the manual
- Uses for non-intended purposes
- Improper repairs
- Technical alterations
- Use of unauthorized spare parts

All translations are carried out to the best of our knowledge. We do not assume any liability for translation errors, not even if the translation was carried out by us or on our instructions. The original German text remains solely binding.

1.6 Copyright protection

This document is copyright protected.

CASO Design USA LLC reserves all the rights, including those for photomechanical reproduction, duplication and distribution using special processes (e.g. data processing, data carriers, data networks), even partially.

Subject to content and technical changes.

2 Safety

This chapter provides you with important safety notices when handling the device.

The device corresponds with the required safety regulations. Improper use can result in personal or property damages.

2.1 Intended use

This device is only intended for use in households in enclosed spaces for

- Extracting juice from vegetables and / or fruit

Uses for a different purpose or for a purpose which exceeds this description are considered incompatible with the intended or designated use.

Warning

Danger due to unintended use!

Dangers can emanate from the device if it is used for an unintended use and/or a different kind of use.

- ▶ Use the device exclusively for its intended use.
- ▶ Observe the procedural methods described in this Operating Manual.

Claims of all kinds due to damages resulting from unintended uses are excluded. The User bears the sole risk.

2.2 General Safety information

Please note

Please observe the following general safety notices with regard to the safe handling of the device.

- ▶ Do not let the product operate unsupervised.
- ▶ All cutters or blades are very sharp. Do not touch the cutting edge with hand.
- ▶ Do not use the juice extractor in case that juicing net is damaged.
- ▶ Do not use any accessories not recommended by the product manufacturer to avoid danger.
- ▶ Avoid contacting moving parts.
- ▶ Do not operate any appliance with damaged cord or plug or after the appliance malfunction, or is dropped or damaged in any manner, return appliance to the nearest authorized service facility for examination, repair or electrical or mechanical adjustment.
- ▶ The food that is used must fulfill national standards.

Please note

- ▶ Please correctly install all parts of the product before operating it. Make sure the surface lid is well covered and the hand clasp are well fastened.
- ▶ Always make sure juicer cover is clamped securely in place before motor is turned on. Do not unfasten clamps while juicer is in operation.
- ▶ Be sure to turn switch to OFF position after each use of your juicer. Make sure the motor stops completely before disassembling.
- ▶ Do not put your finger or other objects into the juicer opening while it is in operation. If food becomes lodged in opening, use food pusher or another piece of fruit or vegetable to push it down. When this method is not possible turn the motor off and disassemble juicer to remove the remaining food.
- ▶ Do not use the appliance if the rotating sieve is damaged.
- ▶ When a separable pulp container is provided, do not operate without the pulp container in place.
- ▶ Keep electric appliances out of reach from children or infirm persons. Do not let them use the appliance without supervision.
- ▶ To disconnect, turn Off "ON/OFF" key, then remove plug from wall outlet.
- ▶ Please firstly cut off the power and pull out the power plug before dismantling or adjusting any accessory of the product.
- ▶ Be sure the parts are properly assembled to original base and in place.
- ▶ If the supply cord is damaged, it must be replaced by the manufacturer or its service agent or similarly qualified person in order to avoid a hazard.
- ▶ This appliance is not intended for use by persons (including children) with reduced physical, sensory or mental capabilities, or lack of experience and knowledge, unless they have been given supervision or instruction concerning use of the appliance by a person responsible for their safety.
- ▶ Children should be supervised to ensure that they do not play with the appliance or use it alone.
- ▶ Children aged 8 or above are only allowed to clean the appliance under supervision.
- ▶ Do not use appliance for other than intended household use.

2.3 Sources of danger

2.3.1 Dangers due to electrical power

Danger

Mortal danger due to electrical power!

Mortal danger exists when coming into contact with live wires or subassemblies!

Observe the following safety notices to avoid dangers due to electrical power:

- ▶ Check the rating of the appliance is same as your local mains supply.
- ▶ Unplug from the outlet when not in use and before cleaning. Allow to cool before putting on or taking off parts and before cleaning or storing the appliance.
- ▶ Do not attempt to open the cabinet or dismantle any parts from the appliance; there is no serviceable part inside.
- ▶ In case of damage of the power wire or any other part/component, do not use the electrical appliance.
- ▶ Do not dip the host, power wire and/or plug into water to avoid electrical shock hazard.

3 Commissioning

This chapter provides you with important safety notices during the initial commissioning of the device. Observe the following notices to avoid dangers and damages:

3.1 Safety information

Warning

Personal and property damages can occur during commissioning of the device!

Observe the following safety notices to avoid such dangers:

- ▶ Packaging materials may not be used for playing. There is a danger of suffocation.

3.2 Delivery scope and transport inspection

As a rule, the Slow Juicer is delivered with the following components:

- Lock Cover
- Screw Propeller
- Filter Screen
- Material Barrel
- Pressing Bar
- Brush
- Juice-receiving Cup
- Residue-receiving Cup
- Housing unit
- Operating Instructions

Please note

- ▶ Examine the shipment for its completeness and for any visible damages.
- ▶ Immediately notify the carrier, the insurance and the supplier about any incomplete shipment or damages as a result of inadequate packaging or due to transportation.

3.3 Disposal of the packaging

The packaging protects the device against damages during transit. The packaging materials are selected in accordance with environmentally compatible and recycling-related points of view and can therefore be recycled.

Returning the packaging back to the material loop saves raw materials and reduces the quantities of accumulated waste. Take any packaging materials that are no longer required to “Green Dot” recycling collection points for disposal.



Please note

- ▶ If possible, keep the original packaging for the device for the duration of the guarantee period of the device, in order that the device can be re-packaged properly in the event of a guarantee claim.

3.4 Setup

To ensure a safe and error free operation of the Device the location should fulfill the following requirements:

- Place the Device on a firm and even work surface.
- Do not use the unit outdoors.
- Do not let cord hang over the edge of table or counter or touch hot surface.
- Do not operate the product near hot gas or hot stove.

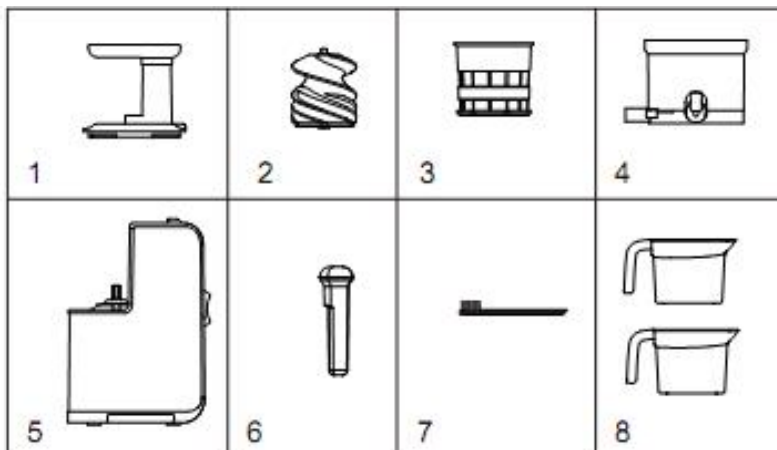
3.5 Electrical requirements

These appliances must be supplied with proper voltage and frequency and connected to an individual, properly grounded branch circuit, protected by a circuit breaker.

4 Design and Function

This chapter provides you with important safety notices on the design and function of the device.

4.1 Overview

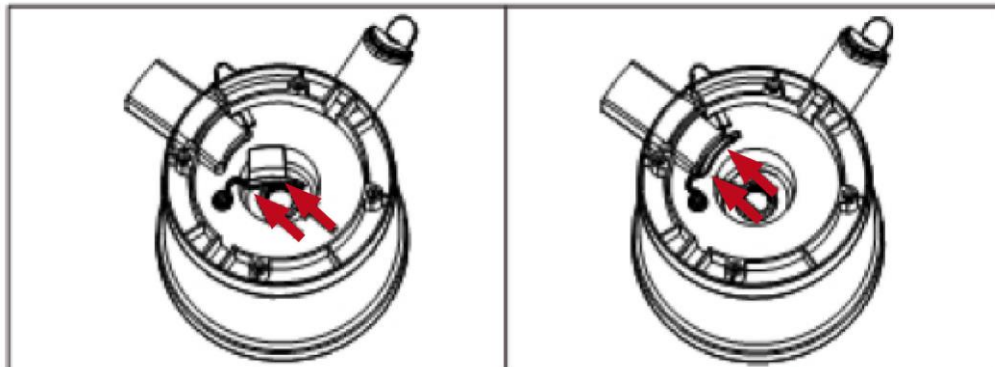


1. Lock Cover
2. Screw Propeller
3. Filter Screen
4. Material Barrel
5. Host
6. Pressing Bar
7. Brush
8. Juice-receiving Cup / Residue-receiving Cup

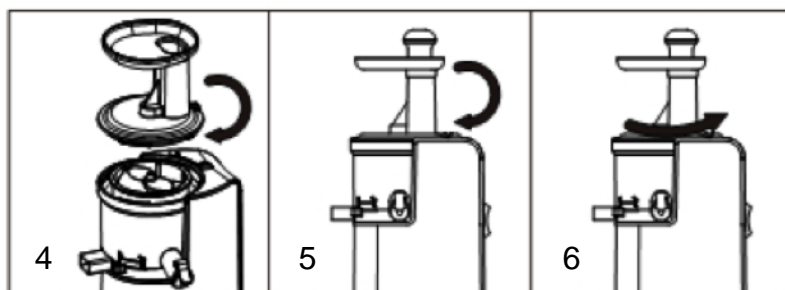
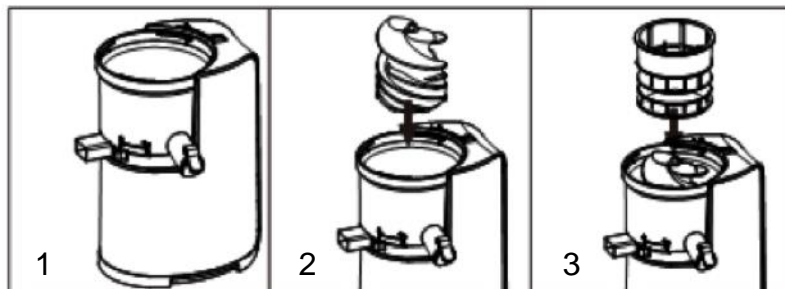
4.2 Assembling

Please note

- ▶ The rubber sheet must be inserted into the bottom of the material barrel before use, and pulled out before cleaning. See the picture below.



1. Put the material barrel at the fixed point of the host and keep it steady (see Figure 1).
2. Install the screw propeller at the middle of the material barrel and slightly press it downwards (see Figure 2).
3. Place the filter screen into the screw propeller, install it at the middle of the material barrel and rotate to the clip (see Figure 3).
4. Install the lock cover on the material barrel. Aligning to the unlocking symbol, and follow the direction of arrow to rotate it to the locking symbol (see Figure 4).



Please note

- ▶ Disassembly should be done in reverse.

Attention

► The unit only works if the lock cover is installed correctly.

5 Operation and handling

This chapter provides you with important notices with regard to operating the device. Observe the following notices to avoid dangers and damages.

Warning

► Do not let the Device unsupervised during operation to be able to react quickly in case of dangers.

5.1 How to use



ON	Forward
OFF	Stop
REV	Reverse

Please note

► If the screw propeller stops during use, please press the “REV” button 3-5 seconds, and then press the “ON” button.

1. For the fruits with hard core, please remove their cores firstly.
2. Stale materials stored in the refrigerator for a long time must be soaked in cold water for at least 10 minutes before use.
3. Materials must be cut into pieces before juicing.
4. Put food materials into feeding tube and push them down by pushing contactor.
5. Do not put too many materials when juicing, to avoid damage to the filter screen.
6. After juice extraction, turn off the switch and pull out the plug.

Please note

- All materials for juicing must be completely fresh.
- Do not use the product to smash grains or extract juice of sugarcanes.
- Do not keep the extracted vegetable/fruit juice for a long time.

5.1.1 Juicing-Locking-Function Switch



Move it towards the unlocking direction to discharge residue. Move it towards the locking direction to discharge residues much drier and lock the juicing.

Attention

- ▶ Do not replace any accessory of the product when the product is running.
- ▶ Please use this product on a stable and safe place.
- ▶ Do not move the host when it is running.
- ▶ Do not put any sundries into the juice or residue outlet.

Attention

- ▶ Do not use any other object than the pressing bar to push down the food.
- ▶ Do not continuously use the device for 15 minutes or extract materials above 3 kg.
- ▶ Please unplug the power source when leaving the product unused.

6 Cleaning and maintenance

This chapter provides you with important notices with regard to cleaning and maintaining the device. Please observe the notices to prevent damages due to cleaning the device incorrectly and to ensure trouble-free operation.

6.1 Safety information

Attention

Please observe the following safety notices, before you commence with cleaning the device:

- ▶ Do not clean the host in water. Wipe off the dirt on the host with a dry cleaning cloth or a soft cloth.
- ▶ Do not use iron brush, abradant, kitchen cleaner, or sharp cleaning tool for cleaning.
- ▶ Do not clean the device or its accessories with water that is hotter than 60°C.

6.2 Cleaning

1. Turn off the unit and pull out the power plug.
2. Rotate the lock cover towards the unlocking direction and pull it upwards for disassembly.
3. Lift up the barrel and clean the parts inside such as screw rod and juicing net.

7 Troubleshooting

This chapter provides you with important notices with regard to operating the device. Observe the following notices to avoid dangers and damages.

Problem	Solution
The device does not start.	• Please confirm whether the power plug is properly plugged.

	<ul style="list-style-type: none"> • Please confirm whether the assembly is done according to assembly methods.
The amount of juice is really little and residues are still very damp.	<ul style="list-style-type: none"> • Please confirm whether the rubber sheet is fastened at the bottom of the material barrel (see pictures). • Check whether stale food is used. • Food that was stored in the refrigerator for a long time must be soaked in clear water for at least 10 minutes before using them.

Problem	Solution
The amount of juice is really little and residues are still very damp.	<ul style="list-style-type: none"> • Please confirm whether the rubber sheet is fastened at the bottom of the material barrel (see pictures). • Check whether stale food is used. • Food that was stored in the refrigerator for a long time must be soaked in clear water for at least 10 minutes before using them.
Shutdown during use.	<ul style="list-style-type: none"> • Check whether too much food is used. • Check whether you forgot to remove hard cores of the food. • Please firstly press the „Reverse“ button for 3-5 seconds and then press the „Forward“ button. If the screw propeller still doesn't run, turn off the device and wash the components in the material barrel separately before using the device again.
Loud noise appears during extracting juice.	<ul style="list-style-type: none"> • When hard food is extracted, loud noise may appear.

Caution

- If you could not solve the problem by following the steps mentioned above, please contact the service center.

8 Disposal of the Old Device

Old electric and electronic devices frequently still contain valuable materials. However, they also contain damaging substances, which were necessary for their functionality and safety.

If these were put in the non-recyclable waste or were handled incorrectly, they could be detrimental to human health and the environment. Therefore, do not put your old device into the non-recyclable waste under any circumstances.



Please note

- ▶ Utilise the collection point, established in your town, to return and recycle old electric and electronic devices. If necessary, contact your town hall, local refuse collection service or your dealer for information.
- ▶ Ensure that your old device is stored safely away from children until it is taken away.

9 Guarantee

12 Months Limited Warranty

Caso Design USA warrants that for a period of 12 months from the date of purchase, this product will be free from defects in material and workmanship. Caso Design USA at its option, will repair or replace this product or any component of the product found to be defective during the warranty period. Replacement will be made with a new or remanufactured product or component. If the product is no longer available, replacement may be made with a similar product of equal or greater value. This is your exclusive warranty. DO NOT attempt to repair or adjust any electrical or mechanical functions on this product. Doing so will void this warranty.

This warranty is valid for the original retail purchaser from the date of the initial retail purchase and is not transferable. Keep the original sales receipt. Proof of purchase is required to obtain warranty performance.

This limited warranty does not cover normal wear of parts or damage resulting from any of the following: negligent use or misuse of the product, use on improper voltage or current, use contrary to the operating instructions, disassembly, repair or alteration by anyone other than Caso Design USA service center. Further this limited warranty does not cover: Acts of God, such as fire, flood, hurricanes and tornadoes.

What are the limits on Caso Design USA's Liability?

Caso Design USA shall not be liable for any incidental or consequential damages caused by the breach of any express, implied or statutory warranty or condition.

Except to the extent prohibited by applicable law, any implied warranty or condition of merchantability or fitness for a particular purpose is limited in duration to the duration of the above warranty.

Caso Design USA disclaims all other warranties, conditions, or representations, express implied, statutory or otherwise.

Caso Design USA shall not be liable for any damages of any kind resulting from the purchase, use or misuse of, or inability to use the product including incidental, special, consequential or similar damages or loss of profits, or for any breach of contract, fundamental or otherwise, or for any claim brought against purchaser by any other party.

Some provinces, states or jurisdictions do not allow the exclusion or limitation of the incidental or consequential damages or limitations on how long an implied warranty lasts, so the above limitations or exclusions may not apply to you.

This warranty gives you specific legal rights, and you may also have other rights that vary from province to province, state to state, or jurisdiction to jurisdiction.

10 Technical Data

Device	Slow Juicer
Article no.	13500
Net Weight	10.54 lbs
Rated Voltage	120 V
Rated Frequency	60 Hz
Motor Power	200 watts